



Welfare Issues in Brick Kilns: Tackling Concerns Holistically Through Partnership

Presenter: Dr Shereene Williams

Abstract authors: Naeem Abbas, Frances Goodrum, Laura Davis

March 2019

CVA Conference



Understanding the context:

Naeem Abbas,
Brooke Pakistan Advocacy
Manager and Global Project
Lead, Brick Kilns

Human Labour



- **The brick kiln industry employs an estimated 5 million people**
- **3.3 million under 18 years old**
- **68% of these workers are in bonded labour**
- **60% live below the poverty line**



Improving Conditions for People



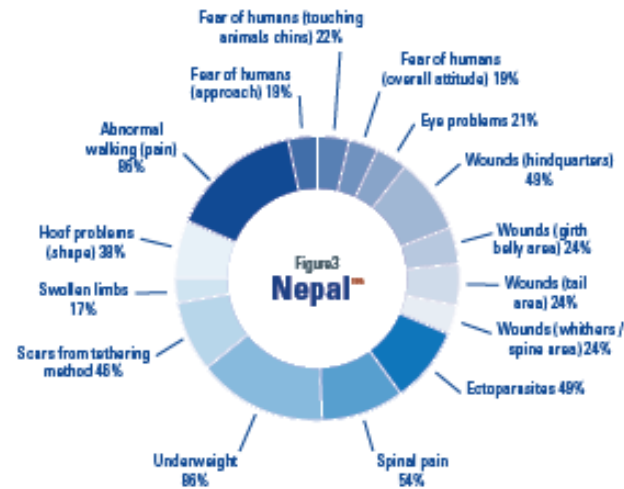
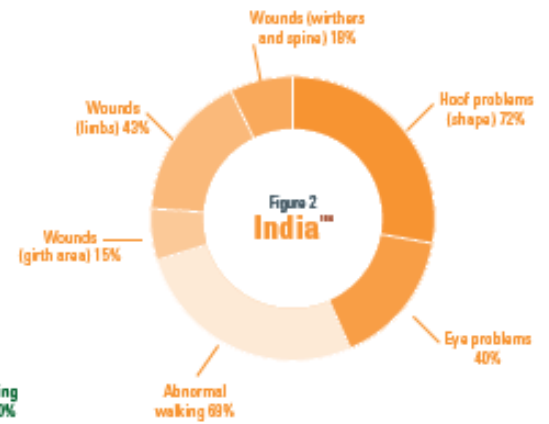
- Brooke has dedicated community engagement
- Gain understanding of the cycle of bonded labour and human welfare
- Advocate for:
 - Government recognition
 - Social security
 - Insurance
 - Minimum wages

Animal Workforce



- **500,000** equids are estimated to be working in the kilns of South Asia
- **80%** of the total income for equine owning families was generated by their animals





Improving Conditions for Animals



Brooke believes in delivering sustainable change in animals health by:

- Building confidence and competence in local vets and paravets
- Strengthening the animal health system in which they work
- Linking communities and stakeholders

Environment



- **23% of South Asia's black carbon emissions come from brick kilns**
- **750 premature deaths every year in Bangladesh due to brick kiln air pollution**

Improving the Environment



- Brooke, the Government of Pakistan and the Brick Kiln Association are working together on a campaign to plant trees within brick kilns.
- These trees will:
 1. Provide shade and shelter for workers and animals and
 2. Reduce carbon footprints

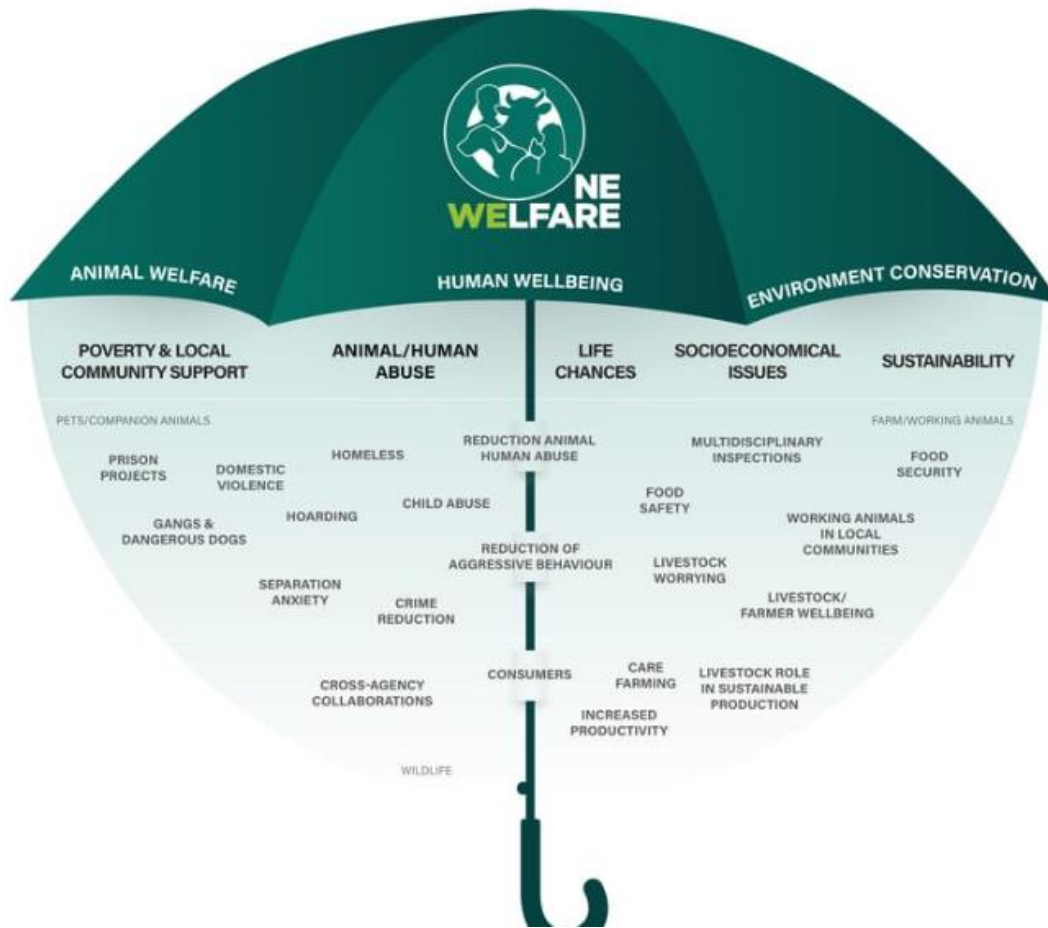
Tree Plantation Ceremony



How are these issues connected?

"serves to highlight the interconnections between animal welfare, human wellbeing and the environment."

One Welfare – Rebeca Garcia





An Inclusive Approach



Conclusions



- The brick kiln industry remains a highly exploitative and harsh working environment
- By working together with human labour and environmental organisations we will have a far greater impact for everyone in the kilns

Recommendations

- Civil society, donors, academia and research institutes need to work together to collectively lobby for a holistic approach
- Greater emphasis and political action is needed to raise the visibility of the issues for animals and those who rely on them as part of the 2030 sustainable development agenda
- Evidence needs to be generated through practical pilots to provide further proof of concept that a welfare friendly approach is needed
- In country and South Asia level OIE reps should support and drive the implementation of the welfare of working equids standards in brick kilns: national governments must establish clear policy and an implementation framework to support these standards

Contact



Naeem Abbas – Advocacy Manager
Brooke Pakistan


naeem@thebrooke.org.pk




Questions?



Visit our stand...

BRICK
by
BRICK



**Environment,
Human Labour
& Animal Welfare**

Unveiling the full picture of South Asia's brick kiln industry and building the blocks for change

